

# Commercial/Industrial Floodplain Development Permit

## Doddridge County, WV Floodplain Management

This permit has been issued to Crestwood Marcellus Midstream, LLC, and is for the approved commercial and/or industrial development project associated with this permit that impacts the FEMA-designated floodplain and/or floodway of Doddridge County, WV, pursuant to the rules and regulations established by all applicable Federal, State and local laws and ordinances, including the Doddridge County Floodplain Ordinance. This permit must be posted at the site of work as to be clearly visible, and must remain posted during entirety of development.

### Permit: #14-231 John North to Tie-In Pipeline

**Date Approved: 07/01/2014**

**Expires: N/A**

**Issued to: Crestwood Marcellus Midstream, LLC**

**POC: Maggie Williams (Thrasher)  
304-326-6352**

**Company Address: PO Box 940  
Bridgeport, WV 26330**

**Project Address: Greenbrier District. John North Well Pad**

**Firm: N/A Lat/Long: 39.224968N/80.576231W to 39.226515N/80.567291W**

**Purpose of development: Pipeline. *Project does not impact floodplain.***

**Issued by: Edwin L. "Bo" Wriston, Doddridge County FPM (or designee)**

**Date: 07/01/2014**

---

For additional information regarding this permit, please contact  
Doddridge County Floodplain Manager at 304.873.2631, or via email at  
doddridgecountyfpm@gmail.com  
118 East Court Street; West Union, WV 26456

---

Legal Advertisement:  
Doddridge County  
Floodplain Permit Application

Please take notice that on the 18<sup>th</sup> day of June, 2014

**CRESTWOOD MARCELLUS MIDSTREAM LLC**

filed an application for a Floodplain Permit to develop land located at or about:

**GREENBRIER DISTRICT, BIG ISAAC, JOHN NORTH WELL PAD**

**39.224968N / 80.576231W TO 39.226515N / 80.567291W**

**Permit #14-231 JOHN NORTH TO TIE-IN PIPELINE**

(Note: This project is not within the floodplain)

The Application is on file with the Clerk of the County Court and may be inspected or copied during regular business hours. Any interested persons who desire to comment shall present the same in writing by **JULY 21, 2014**, delivered to:

Clerk of the County Court

118 E. Court Street, West Union, WV 26456

Beth A Rogers, Doddridge County Clerk

Edwin L. "Bo" Wriston. Doddridge County Flood Plain Manager

# THRASHER

14-231

FILED

2014 JUN 26 AM 11:27

DODDRIDGE COUNTY, WV

June 23, 2014

Mr. Bo Wristen, Floodplain Supervisor  
Doddridge County Commission  
118 East Court Street  
West Union, WV 26456

**RE: *Doddridge County Floodplain Development Permit  
Crestwood Marcellus Midstream, LLC  
John North to Tie-In Pipeline  
Doddridge County, West Virginia  
Thrasher Project #101-070-0297***

To Mr. Wristen:

On behalf of Crestwood Marcellus Midstream (Crestwood), The Thrasher Group, Inc. (Thrasher), is submitting to your office for review and approval an application package for a Doddridge County Floodplain Development Permit for a proposed pipeline in the USGS Big Isaac 7.5 minute quadrangle of Doddridge County, WV and FIRM panel 255 of 325. The proposed area of interest (AOI) for the John North to Tie-In Pipeline consists of a seventy-five foot (75') construction right-of-way (ROW). The proposed pipeline will originate at the John North Well Pad located at approximately 39.224968° N, 80.576231° W. From there, the 16" buried steel pipeline will extend southwest within a proposed 75' wide construction right-of-way (ROW) to a tie in with a 40' x 12' x 6' above ground receiver, located at approximately 39.226515° N, 80.567291° W. The proposed pipeline will be 3,560 LF in total, and its associated AOI will contain approximately 6.84 acres.

The proposed John North to Tie-In Pipeline will have no construction activities within the 100 year floodplain. The pipeline will cross no streams, therefore having no impact.

The USGS topographical map, aerial imagery map, FIRM map, and WV Flood Tool Map contained herein depict the proposed limits of disturbance associated with the proposed construction. No construction is proposed in the flood plain; therefore, no fees are associated with this permit. Note that all required federal and state permits shall be obtained prior to construction, and approvals can be provided upon request.

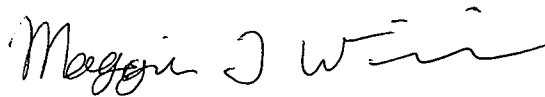
If any further documentation is required for this project, or if any questions or concerns should arise, please feel free to contact me at your earliest convenience at (304) 326-6352 or [mwilliams@thrashereng.com](mailto:mwilliams@thrashereng.com).

# THRASHER

Mr. Wristen  
June 23, 2014  
Page 2 of 2

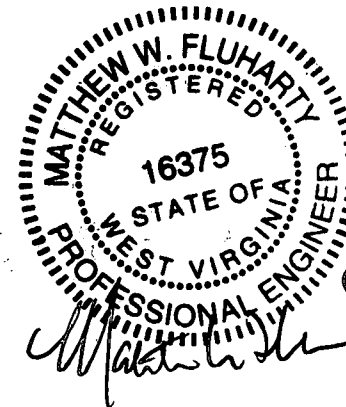
Sincerely,

THRASHER GROUP, INC.



MAGGIE T. WILLIAMS  
Environmental Scientist

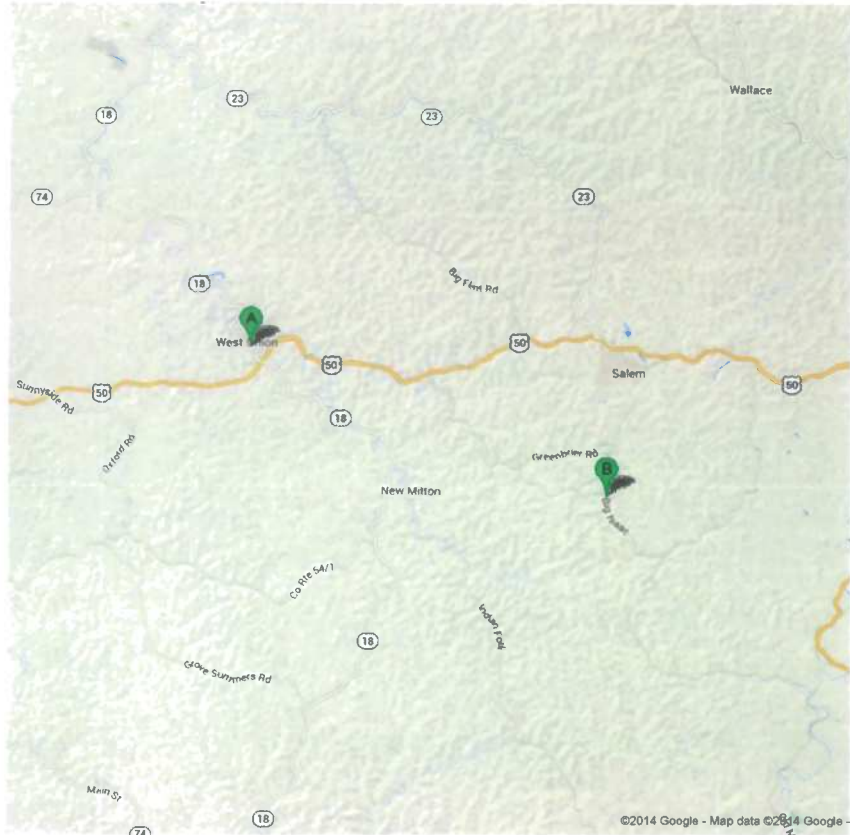
Enclosures












6/23/14



Directions to Big Isaac  
16.2 mi - about 28 mins

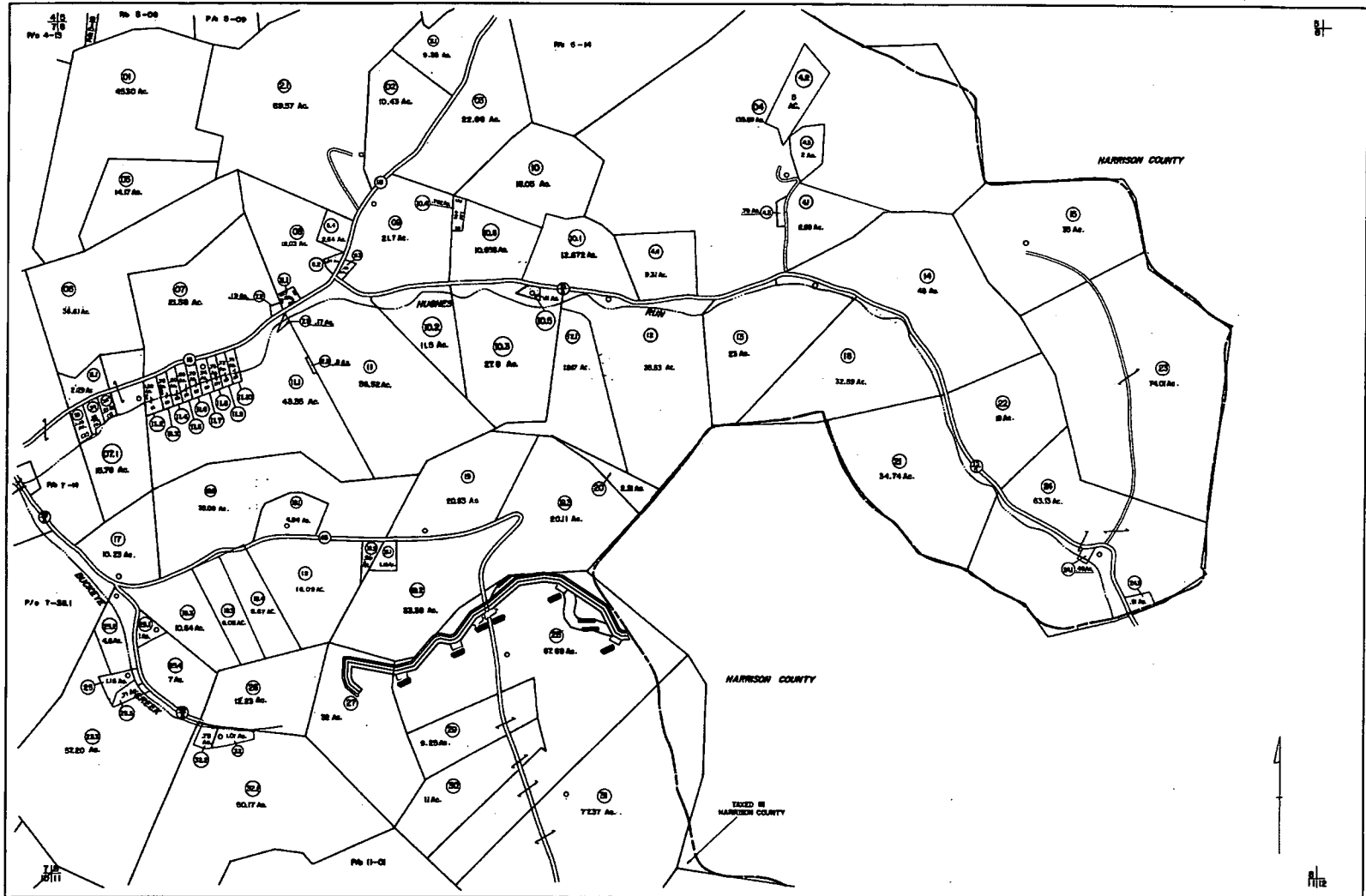


 Court St, West Union, WV 26456

- 
1. Head northeast on Columbia St toward W Main St go 269 ft  
total 269 ft
  -  2. Take the 2nd right onto E Main St  
About 59 secs go 0.2 mi  
total 0.3 mi
  -  3. Turn right onto WV-18 S  
About 2 mins go 0.5 mi  
total 0.8 mi
  -  4. Turn left onto US-50 E  
About 6 mins go 5.6 mi  
total 6.4 mi
  -  5. Turn right at Co Rte 50/35 go 0.1 mi  
total 6.6 mi
  6. Continue onto Blacklick Rd/Sherwood-Greenbrier Rd  
Continue to follow Blacklick Rd  
About 1 min go 0.4 mi  
total 7.0 mi
  -  7. Turn left onto Blacklick Rd/Long Run Rd/Sherwood-Greenbrier Rd  
Continue to follow Blacklick Rd/Sherwood-Greenbrier Rd  
About 4 mins go 1.6 mi  
total 8.7 mi
  -  8. Turn right onto Co Rte 15/Blacklick Rd/Sherwood-Greenbrier Rd  
Continue to follow Co Rte 15  
About 12 mins go 6.3 mi  
total 14.9 mi
  -  9. Turn right onto Big Isaac  
Destination will be on the left  
About 3 mins go 1.3 mi  
total 16.2 mi
-  Big Isaac
- 

These directions are for planning purposes only. You may find that construction projects, traffic, weather, or other events may cause conditions to differ from the map results, and you should plan your route accordingly. You must obey all signs or notices regarding your route.  
Map data ©2014 Google

Directions weren't right? Please find your route on [maps.google.com](https://maps.google.com) and click "Report a problem" at the bottom left.



FOR TAX PURPOSES ONLY

Prepared by  
**L. ROBERT KIMBALL**  
 County Assessor  
 Charleston, Pennsylvania

© 1988, L.R. Kimball, Inc., Harrisburg, PA

**Legend**

Property line	Original lot line
Map of present lot number	Bound by number in number
Commuter Bus	Bound or better number in code
Watered Area	Watered Area
County line	Lotline

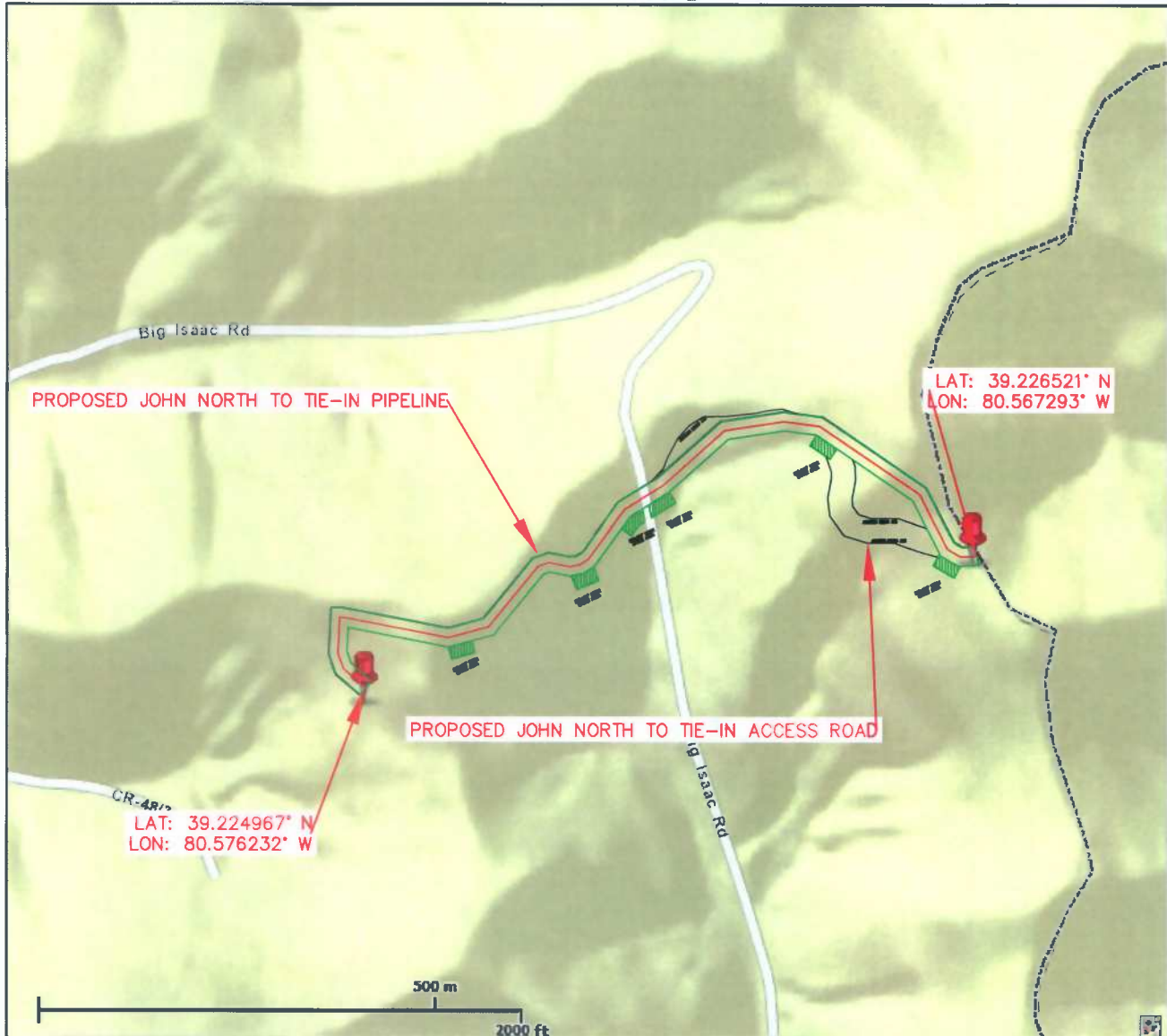
**Revisions**

1	Original Assessor	1/1/87	1/1/87	1/1/87
2	1/1/87	1/1/87	1/1/87	1/1/87
3	1/1/87	1/1/87	1/1/87	1/1/87
4	1/1/87	1/1/87	1/1/87	1/1/87
5	1/1/87	1/1/87	1/1/87	1/1/87
6	1/1/87	1/1/87	1/1/87	1/1/87
7	1/1/87	1/1/87	1/1/87	1/1/87
8	1/1/87	1/1/87	1/1/87	1/1/87
9	1/1/87	1/1/87	1/1/87	1/1/87
10	1/1/87	1/1/87	1/1/87	1/1/87
11	1/1/87	1/1/87	1/1/87	1/1/87
12	1/1/87	1/1/87	1/1/87	1/1/87
13	1/1/87	1/1/87	1/1/87	1/1/87
14	1/1/87	1/1/87	1/1/87	1/1/87
15	1/1/87	1/1/87	1/1/87	1/1/87
16	1/1/87	1/1/87	1/1/87	1/1/87
17	1/1/87	1/1/87	1/1/87	1/1/87
18	1/1/87	1/1/87	1/1/87	1/1/87
19	1/1/87	1/1/87	1/1/87	1/1/87
20	1/1/87	1/1/87	1/1/87	1/1/87
21	1/1/87	1/1/87	1/1/87	1/1/87
22	1/1/87	1/1/87	1/1/87	1/1/87
23	1/1/87	1/1/87	1/1/87	1/1/87
24	1/1/87	1/1/87	1/1/87	1/1/87
25	1/1/87	1/1/87	1/1/87	1/1/87
26	1/1/87	1/1/87	1/1/87	1/1/87
27	1/1/87	1/1/87	1/1/87	1/1/87
28	1/1/87	1/1/87	1/1/87	1/1/87
29	1/1/87	1/1/87	1/1/87	1/1/87
30	1/1/87	1/1/87	1/1/87	1/1/87
31	1/1/87	1/1/87	1/1/87	1/1/87
32	1/1/87	1/1/87	1/1/87	1/1/87
33	1/1/87	1/1/87	1/1/87	1/1/87
34	1/1/87	1/1/87	1/1/87	1/1/87
35	1/1/87	1/1/87	1/1/87	1/1/87
36	1/1/87	1/1/87	1/1/87	1/1/87
37	1/1/87	1/1/87	1/1/87	1/1/87
38	1/1/87	1/1/87	1/1/87	1/1/87
39	1/1/87	1/1/87	1/1/87	1/1/87
40	1/1/87	1/1/87	1/1/87	1/1/87
41	1/1/87	1/1/87	1/1/87	1/1/87
42	1/1/87	1/1/87	1/1/87	1/1/87
43	1/1/87	1/1/87	1/1/87	1/1/87
44	1/1/87	1/1/87	1/1/87	1/1/87
45	1/1/87	1/1/87	1/1/87	1/1/87
46	1/1/87	1/1/87	1/1/87	1/1/87
47	1/1/87	1/1/87	1/1/87	1/1/87
48	1/1/87	1/1/87	1/1/87	1/1/87
49	1/1/87	1/1/87	1/1/87	1/1/87
50	1/1/87	1/1/87	1/1/87	1/1/87
51	1/1/87	1/1/87	1/1/87	1/1/87
52	1/1/87	1/1/87	1/1/87	1/1/87
53	1/1/87	1/1/87	1/1/87	1/1/87
54	1/1/87	1/1/87	1/1/87	1/1/87
55	1/1/87	1/1/87	1/1/87	1/1/87
56	1/1/87	1/1/87	1/1/87	1/1/87
57	1/1/87	1/1/87	1/1/87	1/1/87
58	1/1/87	1/1/87	1/1/87	1/1/87
59	1/1/87	1/1/87	1/1/87	1/1/87
60	1/1/87	1/1/87	1/1/87	1/1/87
61	1/1/87	1/1/87	1/1/87	1/1/87
62	1/1/87	1/1/87	1/1/87	1/1/87
63	1/1/87	1/1/87	1/1/87	1/1/87
64	1/1/87	1/1/87	1/1/87	1/1/87
65	1/1/87	1/1/87	1/1/87	1/1/87
66	1/1/87	1/1/87	1/1/87	1/1/87
67	1/1/87	1/1/87	1/1/87	1/1/87
68	1/1/87	1/1/87	1/1/87	1/1/87
69	1/1/87	1/1/87	1/1/87	1/1/87
70	1/1/87	1/1/87	1/1/87	1/1/87
71	1/1/87	1/1/87	1/1/87	1/1/87
72	1/1/87	1/1/87	1/1/87	1/1/87
73	1/1/87	1/1/87	1/1/87	1/1/87
74	1/1/87	1/1/87	1/1/87	1/1/87
75	1/1/87	1/1/87	1/1/87	1/1/87
76	1/1/87	1/1/87	1/1/87	1/1/87
77	1/1/87	1/1/87	1/1/87	1/1/87
78	1/1/87	1/1/87	1/1/87	1/1/87
79	1/1/87	1/1/87	1/1/87	1/1/87
80	1/1/87	1/1/87	1/1/87	1/1/87
81	1/1/87	1/1/87	1/1/87	1/1/87
82	1/1/87	1/1/87	1/1/87	1/1/87
83	1/1/87	1/1/87	1/1/87	1/1/87
84	1/1/87	1/1/87	1/1/87	1/1/87
85	1/1/87	1/1/87	1/1/87	1/1/87
86	1/1/87	1/1/87	1/1/87	1/1/87
87	1/1/87	1/1/87	1/1/87	1/1/87
88	1/1/87	1/1/87	1/1/87	1/1/87
89	1/1/87	1/1/87	1/1/87	1/1/87
90	1/1/87	1/1/87	1/1/87	1/1/87
91	1/1/87	1/1/87	1/1/87	1/1/87
92	1/1/87	1/1/87	1/1/87	1/1/87
93	1/1/87	1/1/87	1/1/87	1/1/87
94	1/1/87	1/1/87	1/1/87	1/1/87
95	1/1/87	1/1/87	1/1/87	1/1/87
96	1/1/87	1/1/87	1/1/87	1/1/87
97	1/1/87	1/1/87	1/1/87	1/1/87
98	1/1/87	1/1/87	1/1/87	1/1/87
99	1/1/87	1/1/87	1/1/87	1/1/87
100	1/1/87	1/1/87	1/1/87	1/1/87

STATE OF WEST VIRGINIA  
 DODDRIDGE COUNTY  
 Office of Assessor

GREENBRIER DISTRICT  
 SHEET 08  
 Date Aerial Photography: 1988  
 Photo No. 377  
 Date Map: 1/1/88  
 Scale: 1" = 400'

# WV Flood Map



This map is not the official regulatory FIRM or DFIRM. Its purpose is to assist with determining potential flood risk for the selected location.

Map Created on 6/16/2014



Location of the mouse click



**Flood Hazard Zone**  
(1% annual chance floodplain)

User Notes:

**Disclaimer:**

The online map is for use in administering the National Flood Insurance Program. It does not necessarily identify all areas subject to flooding, particularly from local drainage sources of small size. To obtain more detailed information in areas where Base Flood Elevations have been determined, users are encouraged to consult the latest Flood Profile data contained in the official flood insurance study. These studies are available online at [www.msc.fema.gov](http://www.msc.fema.gov).

WV Flood Tool is supported by FEMA, WV NFIP Office, and WV GIS Technical Center  
(<http://www.MapWV.gov/flood>)

**Flood Hazard Area:**

Elevation: N/A

Location (long, lat):

Location (UTM 17N):

FEMA Issued Flood Map:

Contacts:

CRS Information:

Parcel Number:



John North to Tie-In Pipeline Project  
Jurisdictional Features Stream and Wetland Delineation Photo Log  
6/18/14



1) Typical habitat, facing west



2) Typical habitat, facing east



3) Proposed John North Well Pad – under construction



4) Upland Point #2, facing west

John North to Tie-In Pipeline Project  
Jurisdictional Features Stream and Wetland Delineation Photo Log  
6/18/14



5) Stream 1 (EPH) facing upstream



6) Stream 1 (EPH) facing downstream

FILED

2014 JUL 11 AM 11:25

BETH A. ROGERS  
COUNTY CLERK  
DODDRIDGE COUNTY, WV

STATE OF WEST VIRGINIA,  
COUNTY OF DODDRIDGE, TO WIT

I, Virginia Nicholson, Editor of THE  
HERALD RECORD, a weekly newspaper  
published regularly, in Doddridge County,  
West Virginia, Do Hereby Certify  
That the Accompanying Legal Notice  
Entitled:

*Floodplain Permit*  
*# 14-231*

was published in said paper for .....

successive weeks beginning with the issue

of *July 1st* 2014 and

ending with the issue of

*July 8th* 2014 and

that said notice contains *189*

WORD SPACE at *115* cents a word

amounts to the sum of \$ *21,74*

FOR FIRST PUBLICATION, SECOND  
PUBLICATION IS 75% OF THE FIRST  
PUBLICATION

\$ *16.31*

and each publication thereafter

\$ *3,805* TOTAL

EDITOR

*Virginia Nicholson*

SWORN TO AND SUBSCRIBED

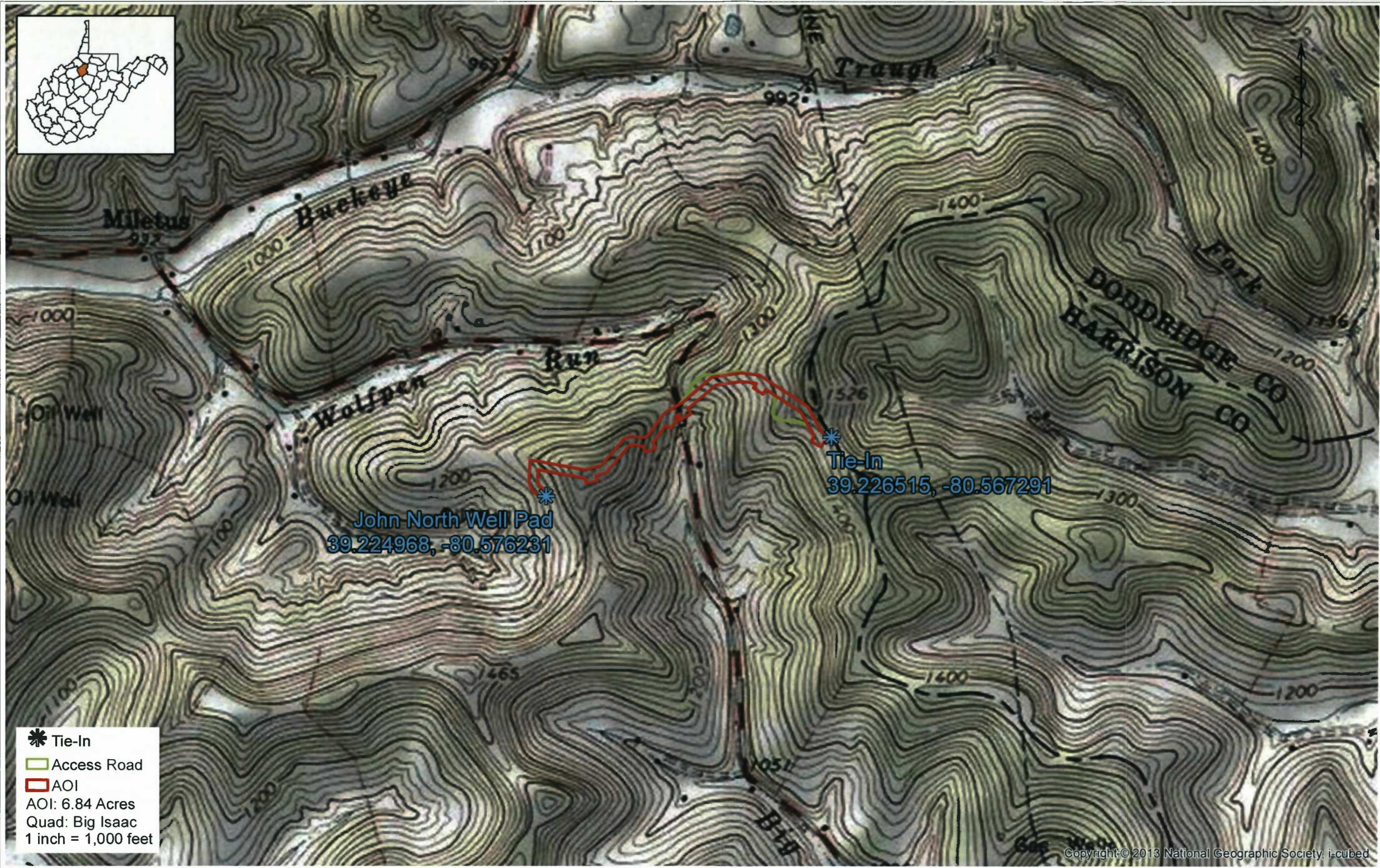
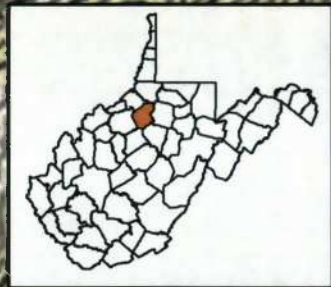
BEFORE ME THIS THE *10th* DAY

OF *July* 2014

NOTARY PUBLIC  
*Laura J Adams*

LEGAL ADVERTISEMENT  
Doddridge County  
Floodplain Permit Application  
Please take notice that on the 18th day of June, 2014  
CRESTWOOD MARCELLUS MIDSTREAM LLC filed  
an application for a Floodplain Permit to develop land  
located at or about: GREENBRIER DISTRICT, BIG  
ISAAC, JOHN, NORTH WELL, PAD  
39.224968N/80.576231W TO 39.226515N/80.567291W  
Permit #14-231 JOHN/NORTH/TIE-IN PIPELINE  
(Note: This project is not within the floodplain)  
The Application is on file with the Clerk of the County  
Court and may be inspected, copied, during regular  
business hours. Any interested persons who desire to  
comment shall present the same in writing by July 21,  
2014.  
Delivered to the:  
Clerk of the County Court  
118 E. Court Street, West Union, WV 26456  
Beth A. Rogers, Doddridge County Clerk  
Edwin L. "Bo" Wriston, Doddridge County Flood Plain  
Manager  
7-1-2xb





\* Tie-In  
Access Road  
AOI  
AOI: 6.84 Acres  
Quad: Big Isaac  
1 inch = 1,000 feet

THRASHER

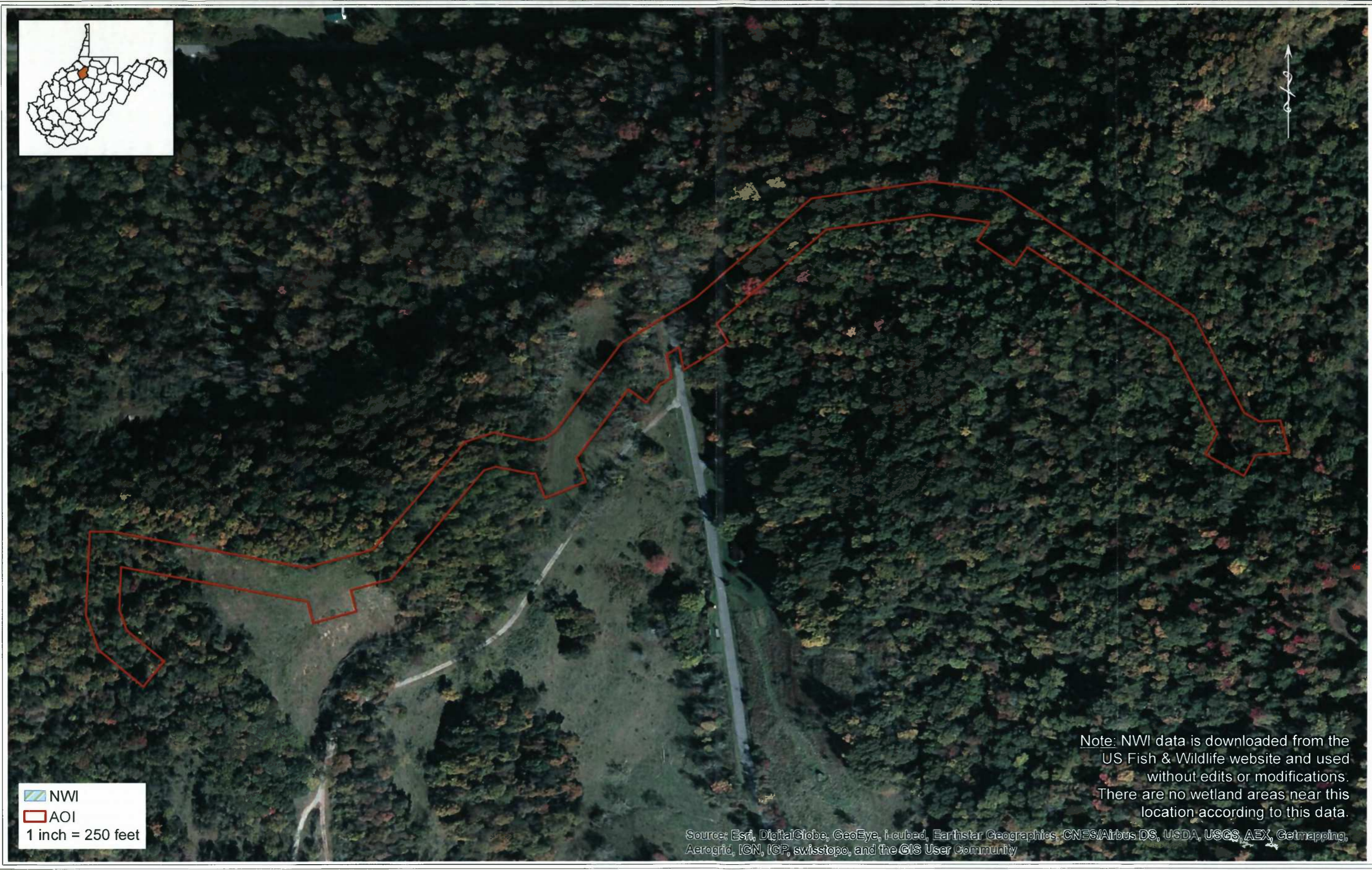
Figure 1: Site Location  
John North to Tie-In  
Doddridge County - West Virginia



6/23/2014

Copyright © 2013 National Geographic Society, i-cubed

By: sgrasser



 NWI  
 AOI  
 1 inch = 250 feet

Note: NWI data is downloaded from the US Fish & Wildlife website and used without edits or modifications. There are no wetland areas near this location according to this data.

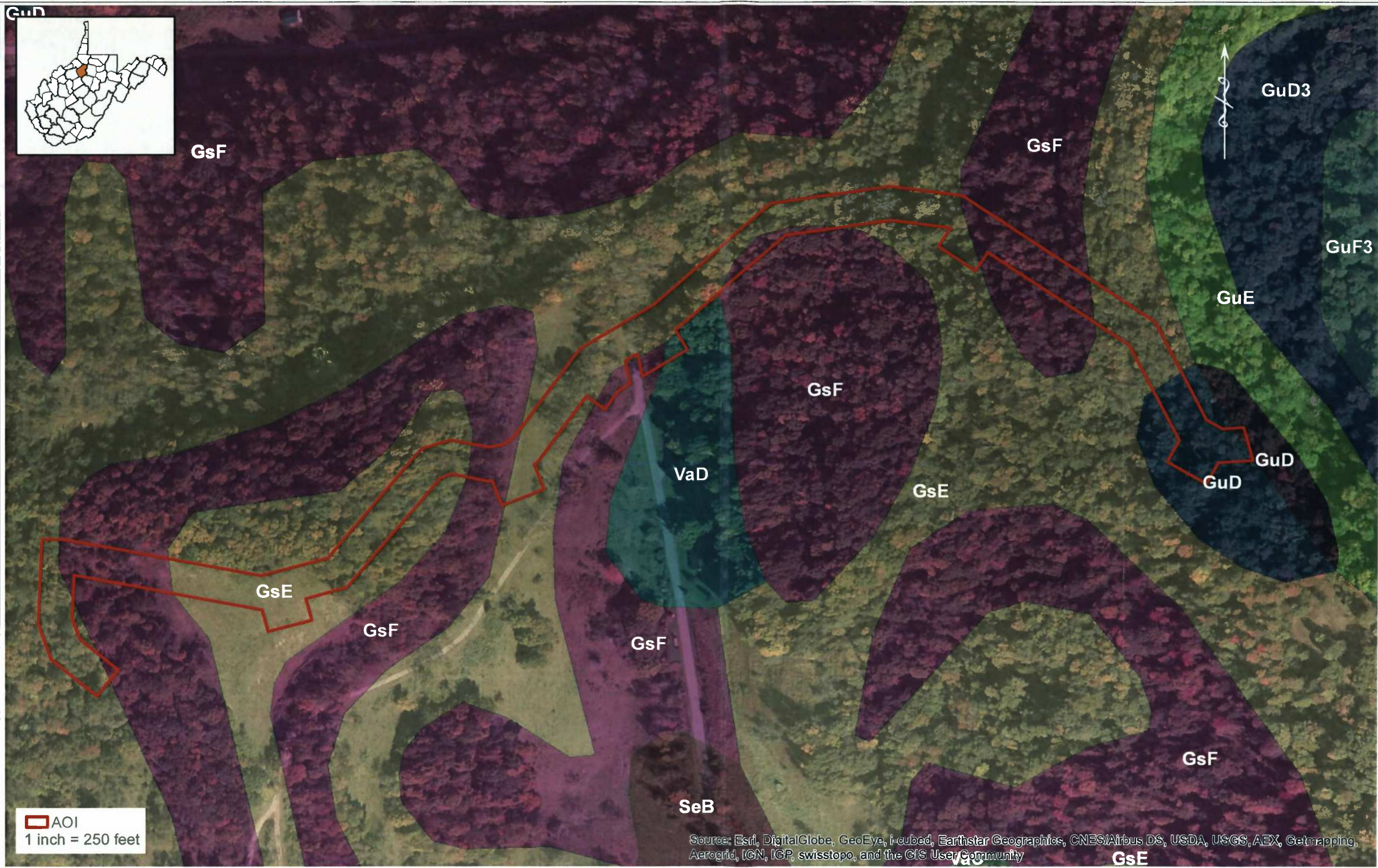
Source: Esri, DigitalGlobe, GeoEye, i-cubed, Earthstar Geographics, CNES/Airbus DS, USDA, USGS, AEX, Getmapping, Aerogrid, IGN, IGP, swisstopo, and the GIS User Community



**Figure 2: NWI Mapper**  
 John North to Tie-In  
 Doddridge County - West Virginia

**THRASHER**

6/23/2014



By: egrasser

AOI  
1 inch = 250 feet

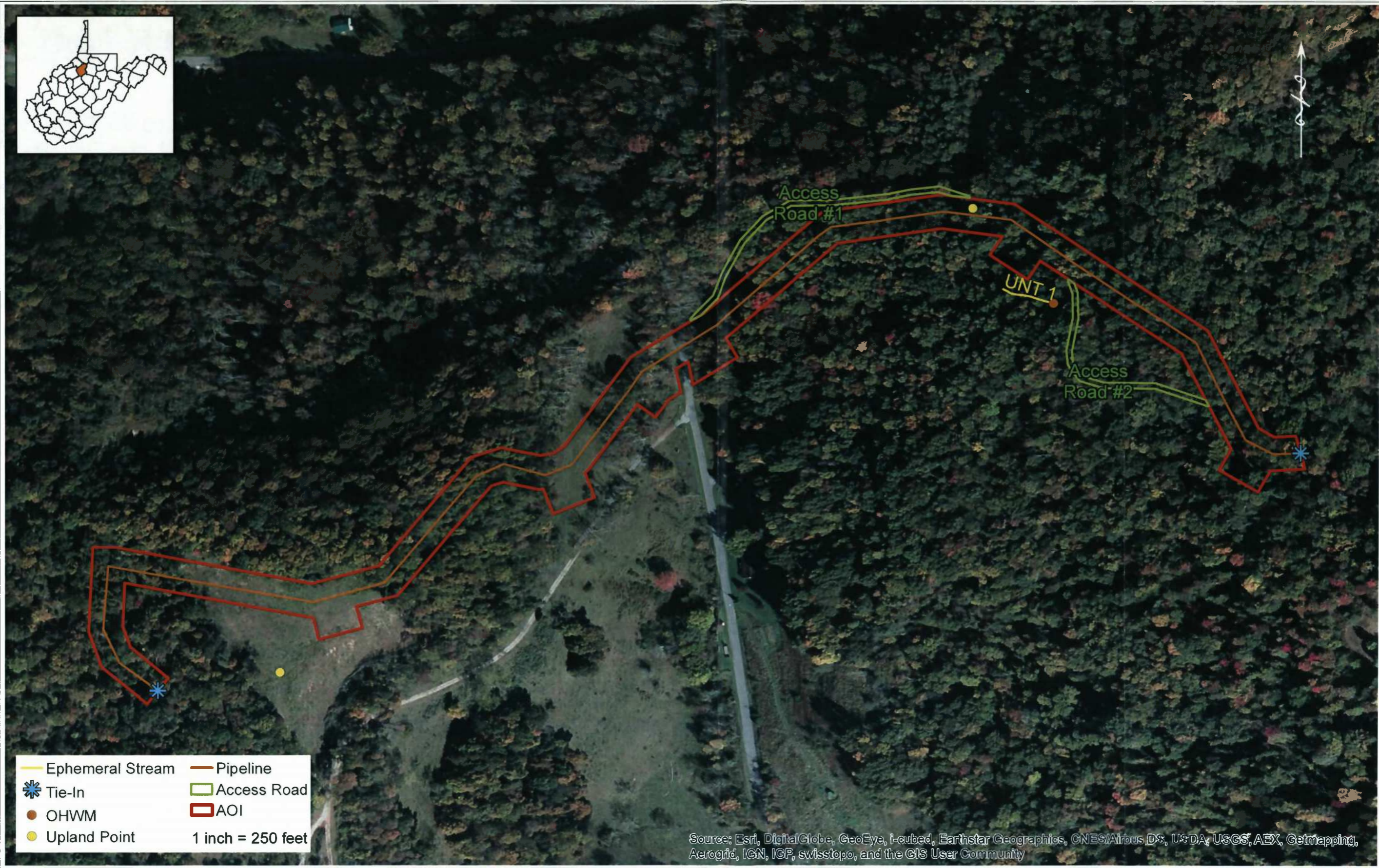
Source: Esri, DigitalGlobe, GeoEye, i-cubed, Earthstar Geographics, CNES/Airbus DS, USDA, USGS, AEX, Gettrapping, Aerogrid, IGN, IGP, swisstopo, and the GIS User Community

THRASHER

Figure 3: Soils  
John North to Tie-In  
Doddridge County - West Virginia

6/23/2014





- Ephemeral Stream
- ✱ Tie-In
- OHWM
- Upland Point
- Pipeline
- Access Road
- AOI

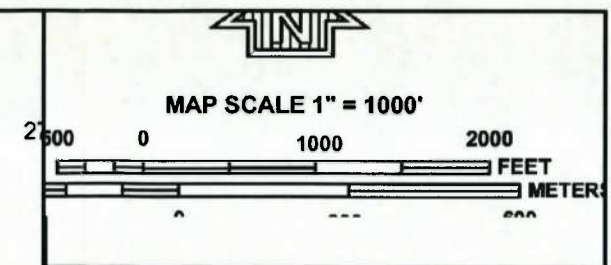
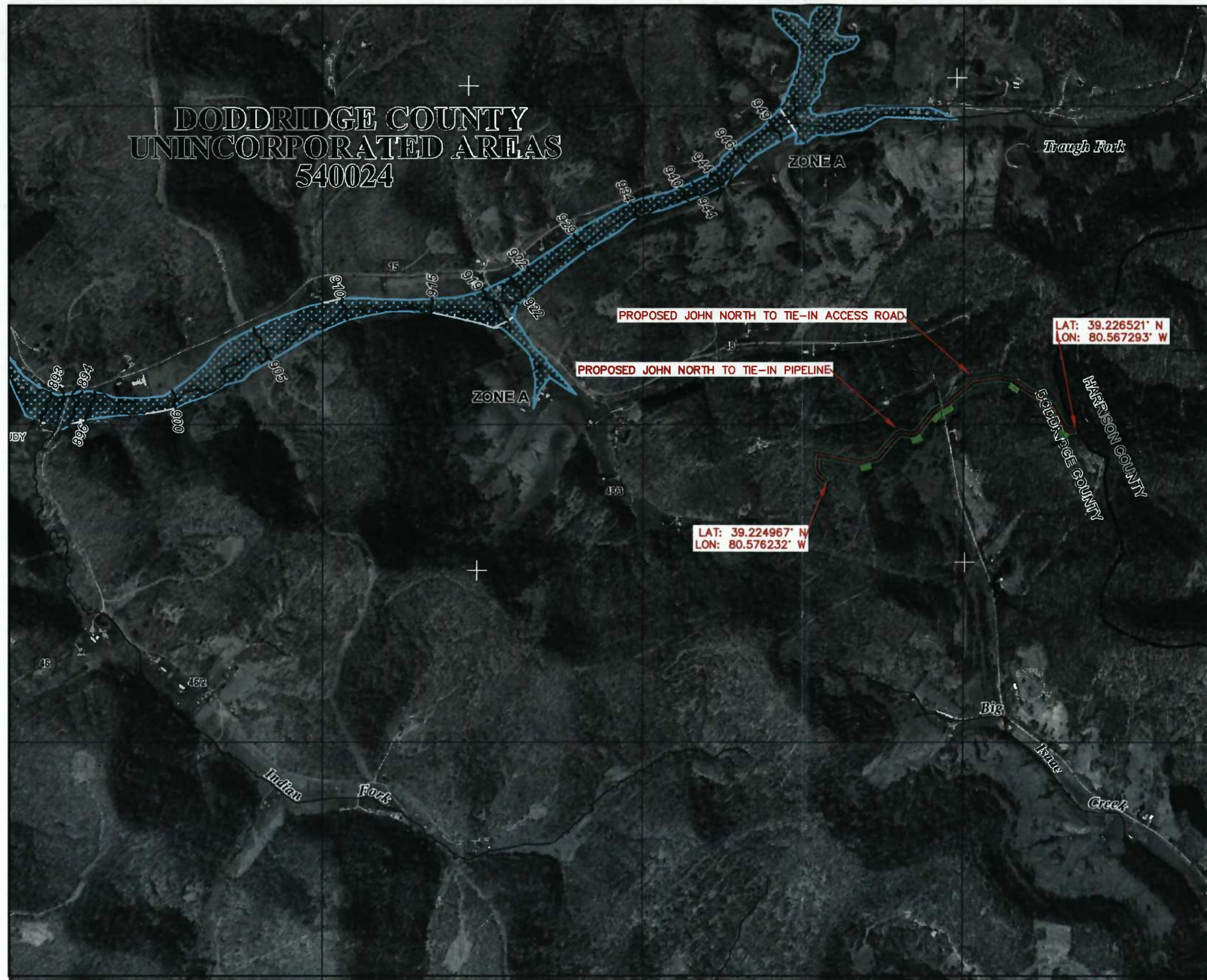
1 inch = 250 feet

Source: Esri, DigitalGlobe, GeoEye, i-cubed, Earthstar Geographics, CNES/Airbus DS, USDA, USGS, AEX, Getmapping, Aerogrid, IGN, IGP, swisstopo, and the GIS User Community

Figure 4: Delineation  
John North to Tie-In  
Doddridge County - West Virginia



**DODDRIDGE COUNTY  
UNINCORPORATED AREAS  
540024**



**NFIP**  
**NATIONAL FLOOD INSURANCE PROGRAM**

PANEL 0255C


**FIRM**  
FLOOD INSURANCE RATE MAP  
DODDRIDGE COUNTY,  
WEST VIRGINIA  
AND INCORPORATED AREAS

PANEL 255 OF 325  
(SEE MAP INDEX FOR FIRM PANEL LAYOUT)

CONTAINS:

COMMUNITY	NUMBER	PANEL	SUFFIX
DODDRIDGE COUNTY	540024	0255	C

Notice to User: The Map Number shown below should be used when placing map orders; the Community Number shown above should be used on insurance applications for the subject community.

 **MAP NUMBER**  
54017C0255C  
**MAP REVISED**  
OCTOBER 4, 2011  
Federal Emergency Management Agency

JOINS PANEL 0260

This is an official copy of a portion of the above referenced flood map. It was extracted using F-MIT On-Line. This map does not reflect changes or amendments which may have been made subsequent to the date on the title block. For the latest product information about National Flood Insurance Program flood maps check the FEMA Flood Map Store at [www.mec.fema.gov](http://www.mec.fema.gov)